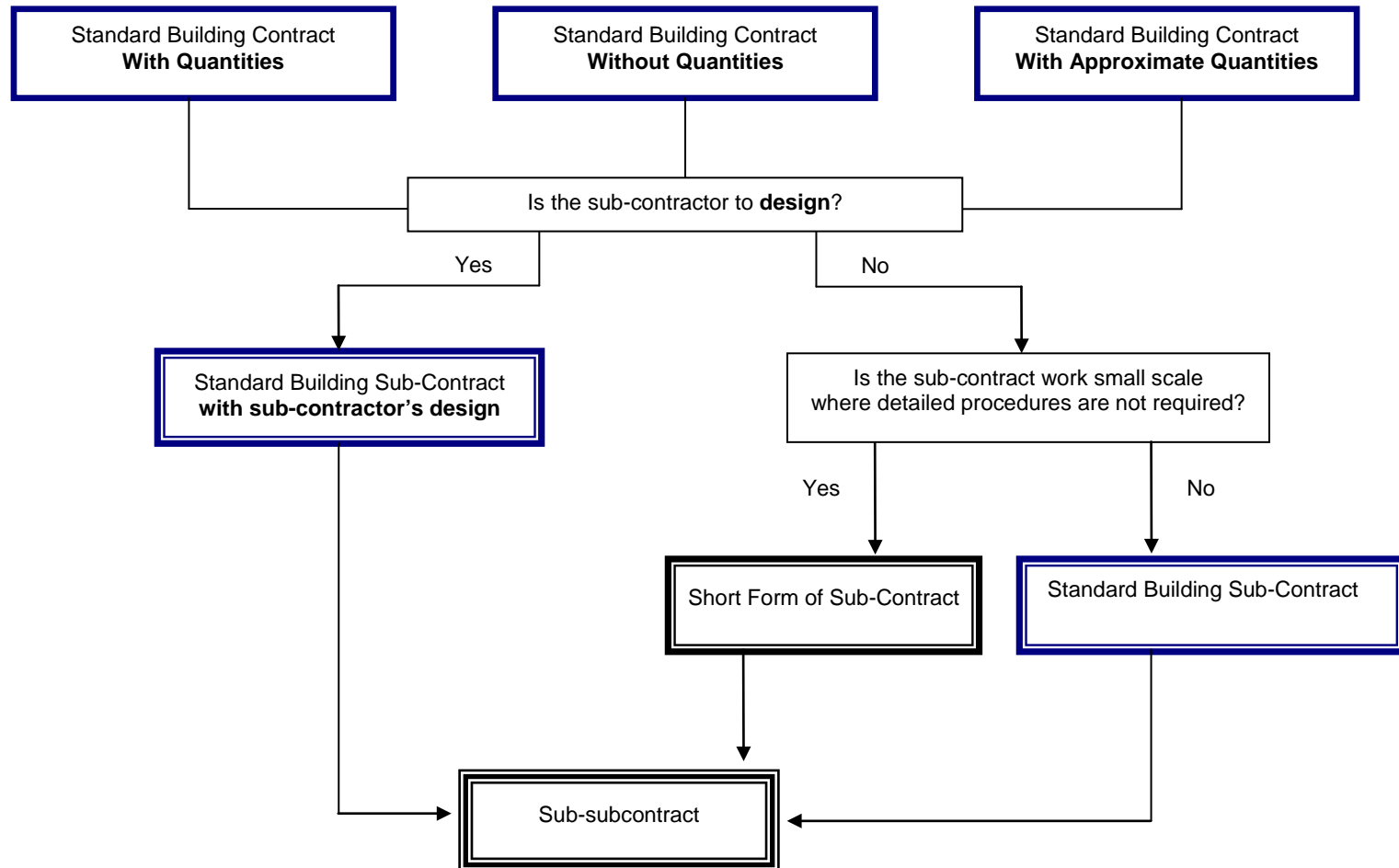
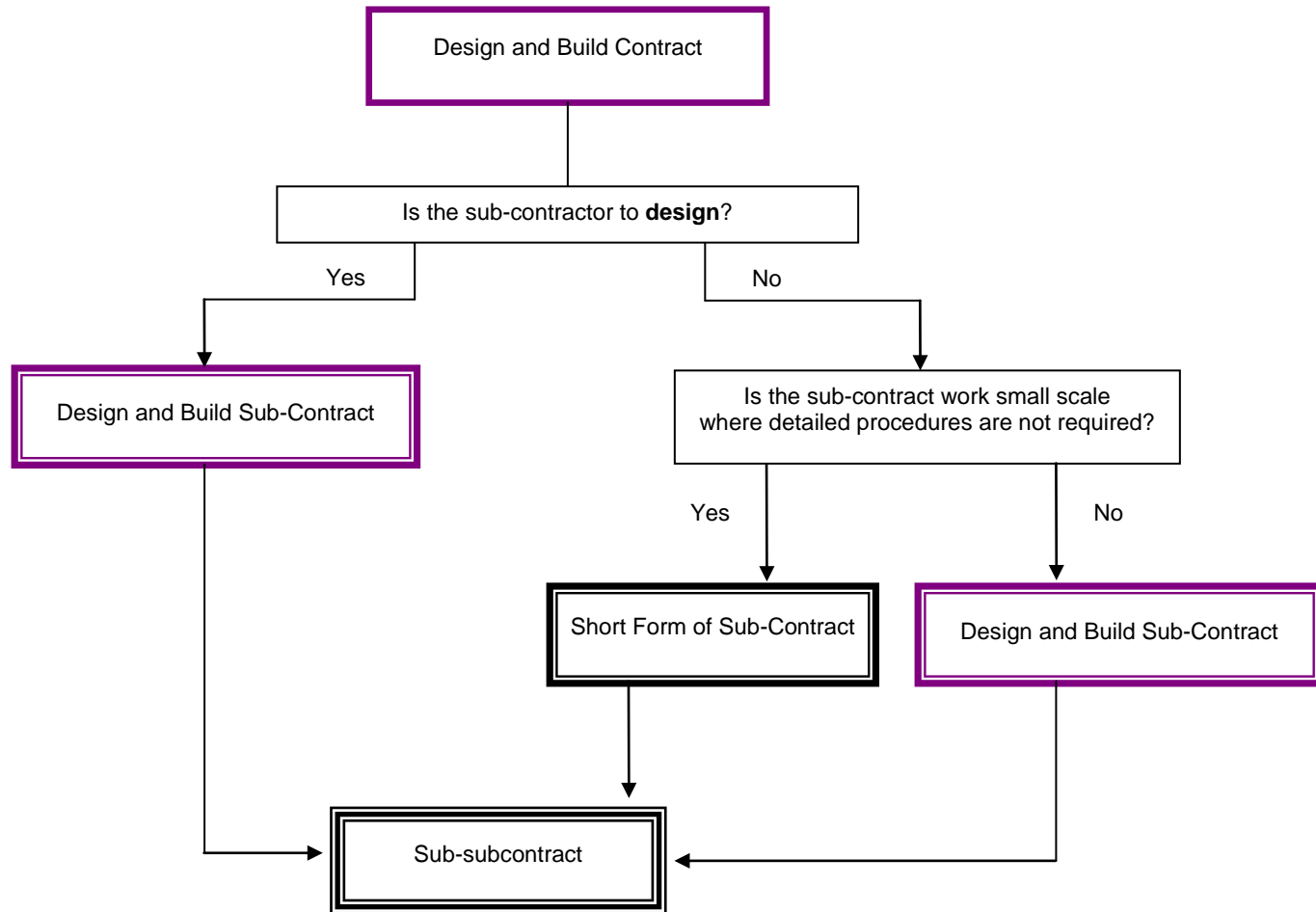
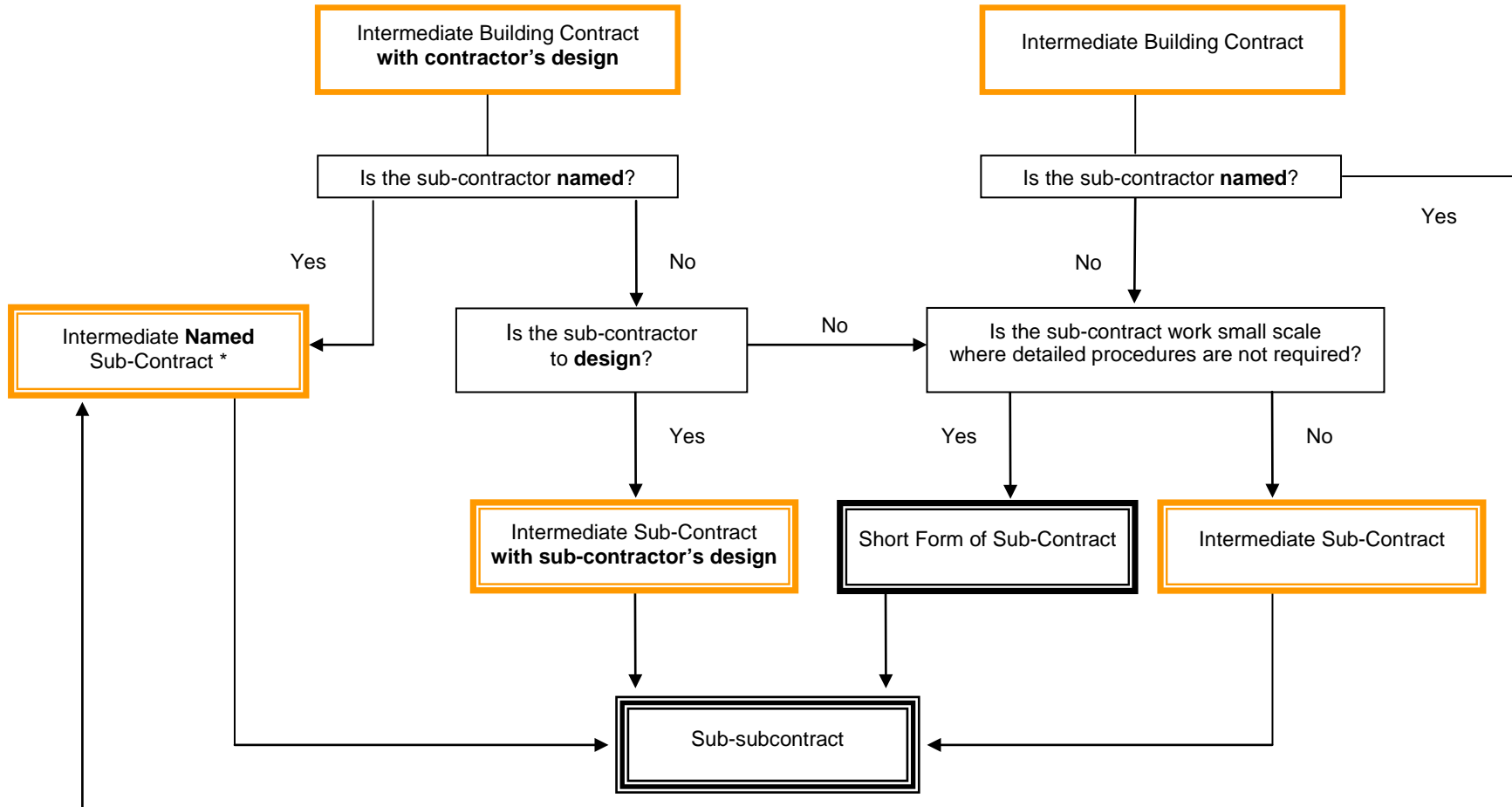


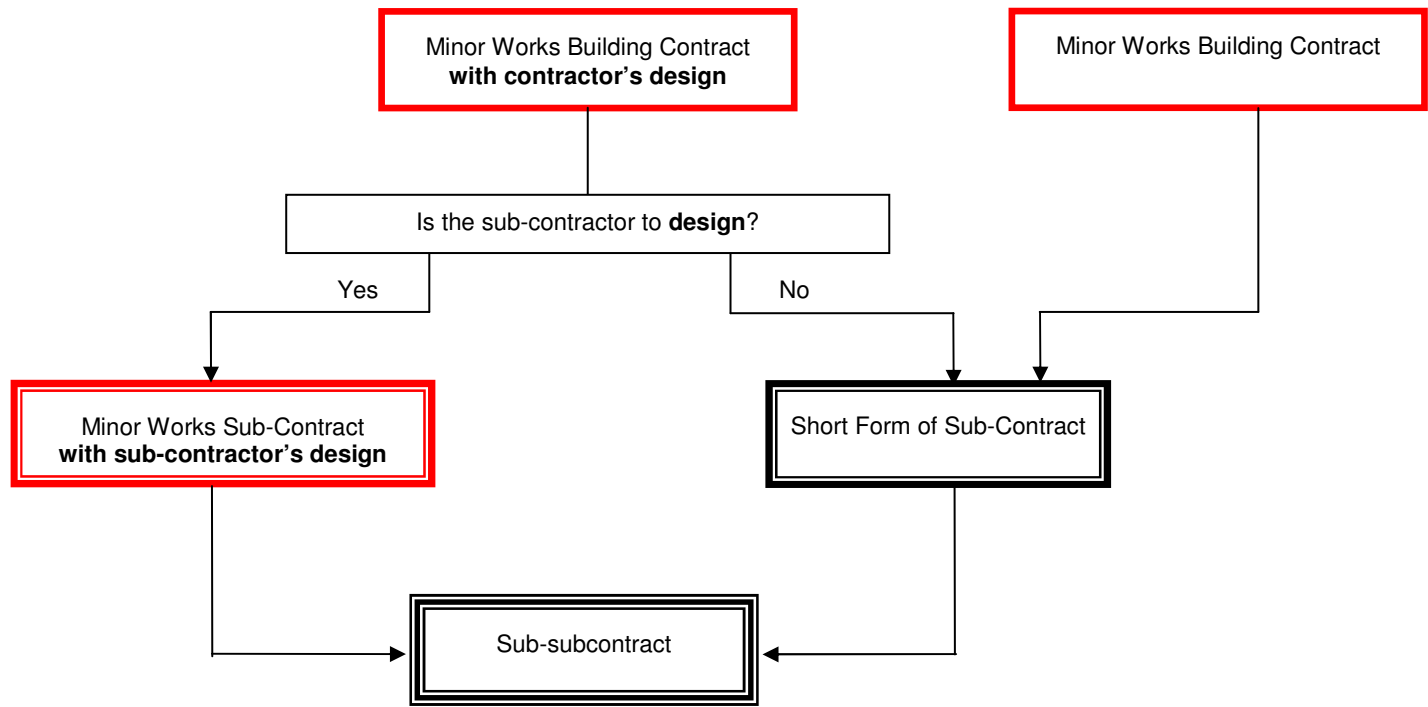
## Guide to selecting the appropriate JCT sub-contract

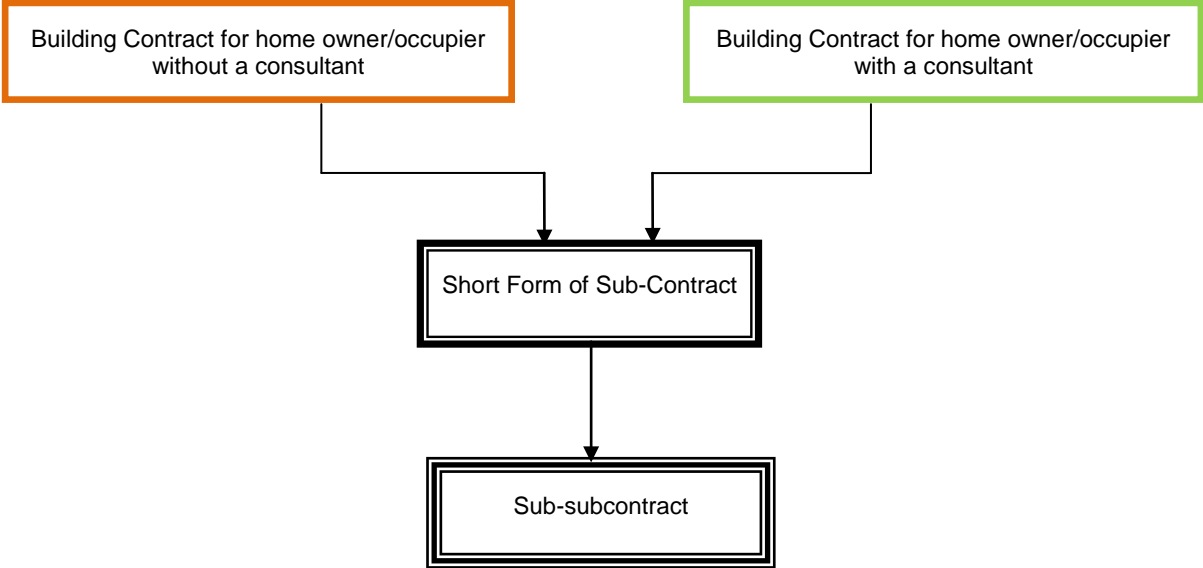






\* Intermediate Named Sub-Contract can be used whether or not the sub-contract works include the sub-contractor's design.





## JCT Construction Contracts

	Framework Agreement	Framework Agreement		Framework Agreement	Framework Agreement	Framework Agreement	Framework Agreement	Framework Agreement	Framework Agreement	Framework Agreement
<p><b>Building contract for a home owner/occupier without a consultant</b></p> <p><b>Building contract and consultancy agreement for a home owner/occupier</b></p> <p><b>Home Repair and Maintenance Contract</b></p>	<p><b>Repair and Maintenance Contract (Commercial)</b></p> <p><b>Minor Works Building Contract</b></p> <p><b>Minor Works Building Contract with contractor's design</b></p>	<p><b>Intermediate Building Contract</b></p> <p><b>Intermediate Building Contract with contractor's design</b></p>	<p><b>Measured Term Contract</b></p>	<p><b>Standard Building Contract With Approximate Quantities</b></p> <p><b>Standard Building Contract With Quantities</b></p> <p><b>Standard Building Contract Without Quantities</b></p>	<p><b>Design and Build Contract</b></p>	<p><b>Major Project Construction Contract</b></p>	<p><b>Prime Cost Building Contract</b></p>	<p><b>Management Building Contract</b></p>	<p><b>Construction Management Trade Contract<sup>1</sup></b></p>	<p><b>JCT - Constructing Excellence Contract</b></p>
<p><b>Short Form of Sub-Contract</b></p>	<p><b>Minor Works Sub-Contract with sub-contractor's design</b></p> <p><b>Short Form of Sub-Contract</b></p>	<p><b>Intermediate Sub-Contract</b></p> <p><b>Intermediate Sub-Contract with sub-contractor's design</b></p> <p><b>Intermediate Named Sub-Contract</b></p> <p><b>Short Form of Sub-Contract</b></p>	<p><b>Short Form of Sub-Contract</b></p>	<p><b>Standard Building Sub-Contract</b></p> <p><b>Standard Building Sub-Contract with sub-contractor's design</b></p> <p><b>Short Form of Sub-Contract</b></p>	<p><b>Design and Build Sub-Contract</b></p> <p><b>Short Form of Sub-Contract</b></p>	<p><b>Major Project Sub-Contract</b></p> <p><b>Short Form of Sub-Contract</b></p>	<p><b>Short Form of Sub-Contract</b></p>	<p><b>Management Works Contract</b></p> <p><b>Short Form of Sub-Contract</b></p>	<p><b>Short Form of Sub-Contract</b></p>	<p><b>JCT - Constructing Excellence Contract</b></p>
<p><b>Sub-subcontract</b></p>	<p><b>Sub-subcontract</b></p>	<p><b>Sub-subcontract</b></p>	<p><b>Sub-subcontract</b></p>	<p><b>Sub-subcontract</b></p>	<p><b>Sub-subcontract</b></p>	<p><b>Sub-subcontract</b></p>	<p><b>Sub-subcontract</b></p>	<p><b>Sub-subcontract</b></p>	<p><b>Sub-subcontract</b></p>	<p><b>JCT - Constructing Excellence Contract</b></p>

Also published by JCT for use with JCT Construction Contracts where appropriate:

Partnering Charter (Non-binding)

Pre-Construction Services Agreement (General Contractor)

Pre-Construction Services Agreement (Specialist)

Consultancy Agreement (Public Sector)

Project Bank Account Documentation

<sup>1</sup> Used in conjunction with the Construction Management Appointment